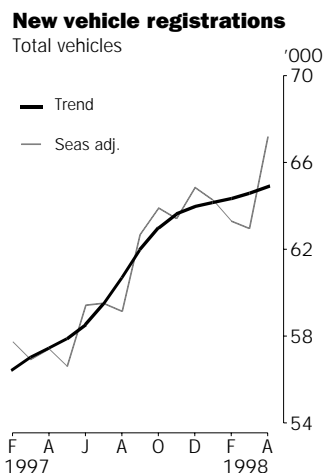


NEW MOTOR VEHICLE REGISTRATIONS

AUSTRALIA
PRELIMINARY

EMBARGO: 11:30AM (CANBERRA TIME) FRI 29 MAY 1998



APRIL KEY FIGURES

TREND ESTIMATES

	Apr 98	monthly % change	annual % change
Total new motor vehicle registrations	64 886	0.5	12.9
Passenger vehicles	54 498	0.2	12.4
Other vehicles	10 389	2.0	15.6

SEASONALLY ADJUSTED

	Apr 98	monthly % change	annual % change
Total new motor vehicle registrations	67 169	6.7	17.0
Passenger vehicles	56 391	5.7	15.9
Other vehicles	10 779	12.1	23.4

ORIGINAL ESTIMATES

	Apr 98	monthly % change	annual % change
Total new motor vehicle registrations	60 690	-11.1	6.2
Passenger vehicles	50 823	-12.0	6.0
Other vehicles	9 867	-6.6	7.7

APRIL KEY POINTS

TREND ESTIMATES

- The trend for new motor vehicle registrations has risen this month by 0.5%. Registrations of passenger vehicles in April 1998 rose by 0.2% and other vehicles rose by 2.0% compared with last month.

TAKE CARE!
Trend estimates are revised as new monthly data become available.

SEASONALLY ADJUSTED ESTIMATES

- Seasonally adjusted total new motor vehicle registrations for April 1998 increased by 6.7% compared with March 1998. This significant rise follows slight falls in seasonally adjusted registrations over the last three months. Registrations rose in all States but fell in Northern Territory and Australian Capital Territory by 3.3% and 7.8% respectively.

ORIGINAL ESTIMATES

- Total registrations of new motor vehicles for April 1998 decreased by 11.1% compared with March 1998. Passenger vehicles fell by 12.0% and other vehicles fell by 6.6%. All States and Territories recorded falls.

For further information about these and related statistics, contact Robin Walden on 07 3222 6181, or any ABS Office.

NOTES

FORTHCOMING ISSUES

ISSUE	RELEASE DATE
May 1998	26 June 1998
June 1998	31 July 1998
July 1998	28 August 1998

CHANGES IN THIS ISSUE

There are no changes in this issue.

TREND REVISIONS

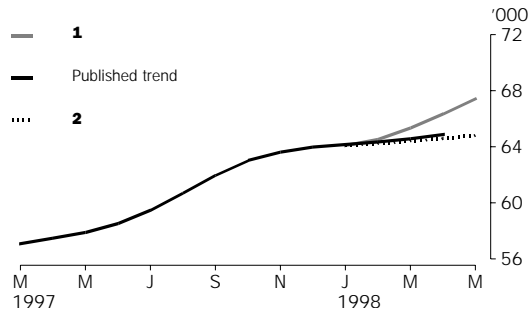
The most recent trend estimates are likely to be revised when new seasonally adjusted estimates become available.

The graph below presents the effect of two possible scenarios on the previous trend estimates:

- 1** The May seasonally adjusted estimate for total vehicle registrations is higher than the April seasonally adjusted estimate by 4.5%.
- 2** The May seasonally adjusted estimate for total vehicle registrations is lower than the April seasonally adjusted estimate by -4.5%.

The percentage change of 4.5% was chosen because the average absolute percentage change, based on the last 11 years, has been 4.5%.

TAKE CARE!
Trend estimates are revised as new monthly data become available.

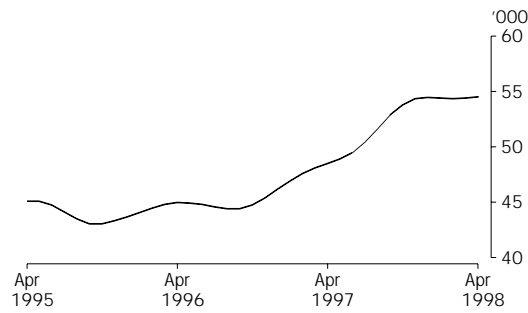


W. McLennan
Australian Statistician

VEHICLE REGISTRATIONS BY TYPE: Trend series

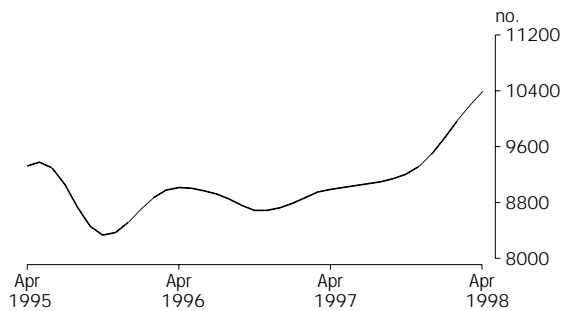
PASSENGER VEHICLES

The trend for new passenger vehicle registrations has remained essentially flat since the high in December 1997.



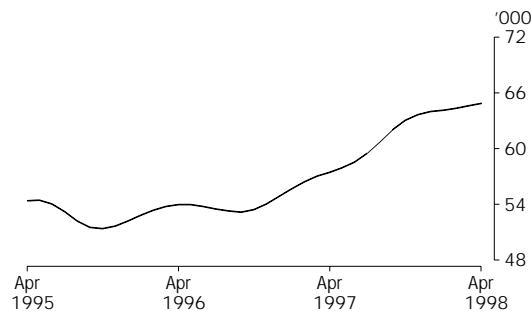
OTHER VEHICLES

The trend for other new vehicle registrations has risen consecutively over the last 17 months and is now 15.2% above the high in April 1996.



TOTAL VEHICLES (EXCLUDING MOTOR CYCLES)

The trend for total new motor vehicle registrations is now 22.0% above the low in September 1996.





NEW MOTOR VEHICLES, Registrations by Type: All series

Month	Passenger vehicles	Other vehicles	Total
ORIGINAL			
1997			
February	46 563	8 308	54 871
March	46 366	8 628	54 994
April	47 959	9 162	57 121
May	48 932	9 689	58 621
June	55 551	12 126	67 677
July	52 302	9 800	62 102
August	49 235	8 348	57 583
September	53 726	8 789	62 515
October	57 471	9 180	66 651
November	52 945	8 521	61 466
December	58 253	9 675	67 928
1998			
January	44 164	7 163	51 327
February	50 794	9 424	60 218
March	57 735	10 567	68 302
April	50 823	9 867	60 690
SEASONALLY ADJUSTED			
1997			
February	48 487	9 237	57 724
March	47 739	9 183	56 921
April	48 657	8 738	57 394
May	47 915	8 685	56 600
June	50 096	9 319	59 415
July	50 414	9 094	59 508
August	50 076	9 082	59 158
September	53 465	9 230	62 695
October	54 573	9 328	63 901
November	54 708	8 700	63 408
December	55 013	9 839	64 852
1998			
January	54 762	9 503	64 265
February	52 813	10 492	63 305
March	53 351	9 617	62 968
April	56 391	10 779	67 169
TREND ESTIMATES(a)			
1997			
February	47 574	8 870	56 444
March	48 103	8 947	57 050
April	48 475	8 983	57 459
May	48 879	9 013	57 892
June	49 486	9 038	58 525
July	50 400	9 068	59 468
August	51 614	9 092	60 706
September	52 855	9 139	61 994
October	53 805	9 201	63 006
November	54 323	9 312	63 635
December	54 464	9 497	63 961
1998			
January	54 416	9 727	64 143
February	54 369	9 964	64 333
March	54 392	10 187	64 579
April	54 498	10 389	64 886

(a) Trend estimates for October 1997 to March 1998 have been revised.

2

NEW MOTOR VEHICLES, Registrations by Type: **Original**

Month	Passenger vehicles	Light commercial vehicles	Rigid trucks	Articulated trucks	Non-freight carrying trucks	Buses	Total (excludes motor cycles)	Motor cycles
1997								
February	46 563	7 069	674	186	58	321	54 871	1 926
March	46 366	7 227	772	241	94	294	54 994	1 913
April	47 959	7 567	886	298	58	353	57 121	1 868
May	48 932	8 067	897	276	96	353	58 621	2 111
June	55 551	10 474	914	302	68	368	67 677	1 745
July	52 302	8 091	978	355	88	288	62 102	1 914
August	49 235	6 672	935	306	131	304	57 583	2 021
September	53 726	7 172	881	308	140	288	62 515	2 101
October	57 471	7 311	952	425	151	341	66 651	2 850
November	52 945	6 927	891	328	120	255	61 466	2 452
December	58 253	7 926	1 019	351	103	276	67 928	2 549
1998								
January	44 164	6 068	562	197	42	294	51 327	2 181
February	50 794	7 909	859	270	77	309	60 218	2 231
March	57 735	8 800	994	354	85	334	68 302	2 123
April	50 823	8 109	1 003	342	103	310	60 690	2 238

NEW MOTOR VEHICLES, Registrations by State: All series

Month	New South Wales	Victoria	Queensland	South Australia	Western Australia	Tasmania	Northern Territory	Australian Capital Territory	Australia
ORIGINAL									
1997									
February	18 926	13 958	9 823	3 827	5 961	898	551	927	54 871
March	19 390	13 559	10 619	3 627	5 224	958	704	913	54 994
April	19 916	14 167	10 521	3 716	5 886	1 047	852	1 016	57 121
May	20 717	14 508	10 546	3 640	6 164	1 211	773	1 062	58 621
June	24 181	14 948	13 961	4 439	6 728	1 128	873	1 419	67 677
July	20 470	15 483	12 345	3 896	6 489	1 476	664	1 279	62 102
August	18 647	15 249	10 749	3 876	5 937	1 314	589	1 222	57 583
September	21 330	15 552	11 712	4 174	6 297	1 503	632	1 315	62 515
October	21 813	17 462	11 998	4 335	7 489	1 387	712	1 455	66 651
November	21 056	15 252	11 265	4 199	6 533	1 108	619	1 434	61 466
December	21 879	17 038	13 153	4 483	6 977	2 153	644	1 601	67 928
1998									
January	17 342	12 273	9 884	3 366	5 862	925	574	1 101	51 327
February	20 840	14 996	11 176	3 980	6 290	1 007	641	1 288	60 218
March	23 659	17 029	12 646	4 348	6 959	1 224	873	1 564	68 302
April	20 594	14 965	11 772	4 064	6 196	1 033	750	1 316	60 690
SEASONALLY ADJUSTED									
1997									
February	19 820	14 407	10 739	3 881	6 138	1 084	652	1 003	57 724
March	19 598	14 707	10 538	3 713	5 548	1 184	665	967	56 921
April	19 831	13 926	10 348	3 936	6 178	1 265	829	1 081	57 394
May	19 694	13 977	10 362	3 637	5 961	1 260	660	1 049	56 600
June	20 706	13 556	11 910	3 951	6 203	1 200	674	1 216	59 415
July	20 141	14 622	11 372	3 766	6 379	1 381	635	1 211	59 508
August	19 709	15 390	11 039	3 848	6 128	1 237	619	1 187	59 158
September	21 165	15 757	11 991	4 064	6 500	1 265	677	1 276	62 695
October	21 650	16 108	11 775	4 110	6 935	1 268	668	1 387	63 901
November	21 507	15 996	11 873	4 167	6 563	1 144	650	1 507	63 408
December	21 335	16 179	12 333	4 537	6 726	1 400	762	1 581	64 852
1998									
January	22 083	15 915	12 002	4 300	6 569	1 268	787	1 342	64 265
February	21 760	15 503	12 190	4 033	6 464	1 206	758	1 390	63 305
March	20 725	15 604	12 342	3 961	6 667	1 338	788	1 542	62 968
April	22 817	16 468	12 752	4 598	6 901	1 448	762	1 422	67 169
TREND ESTIMATES(a)									
1997									
February	19 452	14 099	10 467	3 749	5 859	1 181	679	958	56 444
March	19 734	14 106	10 581	3 801	5 925	1 197	701	1 007	57 050
April	19 897	14 081	10 702	3 813	5 987	1 219	705	1 054	57 459
May	19 992	14 118	10 870	3 810	6 058	1 247	696	1 100	57 892
June	20 094	14 297	11 082	3 815	6 149	1 267	677	1 143	58 525
July	20 276	14 637	11 310	3 848	6 271	1 274	657	1 194	59 468
August	20 558	15 108	11 532	3 925	6 406	1 273	646	1 258	60 706
September	20 897	15 586	11 711	4 036	6 526	1 265	649	1 324	61 994
October	21 205	15 912	11 837	4 138	6 602	1 258	670	1 384	63 006
November	21 439	16 022	11 940	4 208	6 641	1 256	700	1 429	63 635
December	21 588	15 983	12 060	4 240	6 645	1 263	728	1 454	63 961
1998									
January	21 667	15 916	12 177	4 246	6 642	1 282	751	1 462	64 143
February	21 730	15 888	12 288	4 246	6 647	1 306	769	1 460	64 333
March	21 804	15 895	12 394	4 252	6 665	1 333	780	1 456	64 579
April	21 898	15 919	12 516	4 269	6 687	1 362	789	1 447	64 886

(a) Trend estimates for October 1997 to March 1998 have been revised.

4

NEW PASSENGER VEHICLES, Selected Make/Models: **Original**—April 1998

Make/Model	New South Wales	Victoria	Queensland	South Australia	Western Australia	Tasmania	Northern Territory	Australian Capital Territory	Australia
Ford									
Falcon/Fairmont	1 635	1 366	1 012	314	518	66	40	132	5 083
Festiva	356	313	244	144	112	31	7	26	1 233
Laser	324	254	181	56	76	13	6	18	928
Other	367	294	215	56	128	20	8	18	1 106
Total	2 682	2 227	1 652	570	834	130	61	194	8 350
Holden									
Commodore/Calais	2 527	2 010	1 371	619	724	91	101	268	7 711
Barina	212	147	94	56	53	16	4	7	589
Statesman/Caprice	60	131	51	36	32	1	1	2	314
Other	403	367	204	94	92	20	7	15	1 202
Total	3 202	2 655	1 720	805	901	128	113	292	9 816
Hyundai									
Excel	698	492	310	109	382	37	30	44	2 102
Lantra	166	92	72	24	127	19	3	9	512
Sonata	132	84	64	19	51	7	2	2	361
Other	42	21	18	6	8	1	1	2	99
Total	1 038	689	464	158	568	64	36	57	3 074
Mazda									
323	259	208	117	46	53	5	4	10	702
626	166	128	67	21	39	10	2	7	440
121	106	101	93	23	41	4	..	10	378
Other	57	47	25	7	13	..	1	3	153
Total	588	484	302	97	146	19	7	30	1 673
Mitsubishi									
Magna	634	676	552	334	186	46	27	120	2 575
Lancer	317	337	182	82	139	15	7	19	1 098
Mirage	456	127	91	21	38	7	2	25	767
Other	432	258	170	68	117	12	10	19	1 086
Total	1 839	1 398	995	505	480	80	46	183	5 526
Nissan									
Pulsar	401	327	294	56	118	18	30	44	1 288
Patrol	224	156	234	48	145	13	12	9	841
Maxima	46	45	112	5	25	3	..	2	238
Other	124	101	47	19	28	6	5	3	333
Total	795	629	687	128	316	40	47	58	2 700
Toyota									
Camry	566	443	339	111	176	47	39	23	1 744
Corolla	572	286	231	128	162	26	36	99	1 540
Vienta	595	364	200	77	117	16	9	33	1 411
Other	1 125	631	790	187	370	62	59	54	3 278
Total	2 858	1 724	1 560	503	825	151	143	209	7 973

EXPLANATORY NOTES

INTRODUCTION

1 This publication presents monthly data for registrations of new motor vehicles.

2 The statistics in this publication use the Vehicle Identification Number (VIN), adopted by the State and Territory motor vehicle registration authorities. The information contained in the VIN allows more accurate classification of vehicles. In the case of some States, data processed using the VIN are not strictly comparable with data processed prior to December 1990.

SCOPE AND COVERAGE

3 Motor vehicle registration statistics are obtained from State and Territory motor vehicle registration authorities. The statistics reflect information recorded in registration documents. With the exception of Queensland, the statistics do not depart significantly from actual registrations during the period. In the case of Queensland, a number of registrations processed in a month actually relate to vehicles registered prior to that month.

4 New motor vehicle registrations are obtained from New South Wales, Victoria, Queensland and Western Australia registration authorities on a weekly basis. Other registries provide data for each calendar month. The ABS processes the weekly registration data provided for the above-mentioned States and includes data for the relevant month in this publication. Data referring to the next month are withheld and included in the next month's publication. In some months, the ABS processes five weeks of data for the above States, while other months include four weeks of data. In months where five weeks of data are processed and depending on the actual pattern of registration processing, it is possible that there will be a greater number of registrations recorded because the carry forward from the previous month is likely to be greater than the carry over to the next month.

5 The scope of the statistics:

- includes:
 - passenger vehicles
 - light commercial vehicles
 - trucks
 - buses
 - motorcycles (note: not included in totals)
 - vehicles with diplomatic and consular plates
 - State and Commonwealth owned vehicles.
- excludes:
 - vehicles belonging to the defence forces
 - recreation vehicles such as trail bikes and sand dune buggies (in those States where registration is required).

SEASONAL ADJUSTMENT

6 Seasonal adjustment is a means of removing the estimated effects of normal seasonal variation from the series so that the effects of other influences can be more clearly recognised.

7 Seasonal adjustment does not remove from the series the effect of irregular or non-seasonal influences (e.g. the introduction of new models, processing delays, industrial disputes).

EXPLANATORY NOTES

SEASONAL ADJUSTMENT <i>continued</i>	<p>8 Irregular influences that are highly volatile can make it difficult to interpret the series even after adjustment for seasonal variation.</p> <p>9 Extreme care should be exercised in using the seasonally adjusted series for new motor vehicle registrations in Tasmania, the Northern Territory and the Australian Capital Territory. The small numbers and volatile nature of these data makes reliable estimation of the seasonal pattern very difficult.</p> <p>10 Seasonally adjusted series are calculated for the 'Passenger vehicles', 'Other vehicles' and 'Total vehicles' series for each State and Territory and are aggregated to obtain the total for Australia.</p> <p>11 Seasonal adjustment factors are analysed and revised as necessary annually.</p>
TREND ESTIMATES	<p>12 The smoothing of seasonally adjusted series to create trend estimates reduces the impact of the irregular component of the seasonally adjusted series. The trend estimates are derived by applying a 13-term Henderson-weighted moving average to the respective seasonally adjusted series. These trend series are used to analyse the underlying behaviour of the series over time.</p> <p>13 While this smoothing technique enables trend estimates to be produced for the latest month, it does result in revisions to the trend estimates for the most recent months as data for subsequent months become available. Generally subsequent revisions become smaller and after three months, usually have a negligible impact on the series. Changes in the original data and re-estimation of seasonal factors may also lead to revisions to the trend. For further information, see <i>A Guide to Interpreting Time Series — Monitoring 'Trends': an Overview</i> (Cat. no. 1348.0) or contact the Assistant Director, Time Series Analysis on (02) 6252 6345.</p>
RELATED PUBLICATIONS	<p>14 For a more detailed break-up of the monthly figures presented here, inquiries should be made to Robin Walden on 07 3222 6181 or to any ABS office. Data on total vehicle registrations, both new and re-registrations, is available in <i>Motor Vehicle Census, Australia, 31 October 1996</i> (Cat. no. 9309.0).</p>
SYMBOLS AND OTHER USAGES	<p>n.p. not available for publication, but included in totals.</p>

GLOSSARY

Articulated trucks	Vehicles constructed primarily for load carrying consisting of a prime mover having no significant load carrying area but with a turn table device which can be linked to a trailer. With or without a trailer the gross combination mass will be 3.5 tonnes or more.
Buses	Vehicles constructed for the carriage of passengers. Included are all passenger vehicles with 10 or more seats, including the driver's seat.
Light commercial vehicles	Describes goods carrying vehicles less than 3.5 tonnes gross vehicle mass. Included are utilities, panel vans, cab-chassis and forward control vehicles (whether four-wheel drive or not).
Motor cycles	Includes 2 and 3 wheeled mopeds, scooters, motor tricycles and motor cycles with side cars.
Non-freight carrying trucks	Includes specialist vehicles such as ambulances, mobile cranes or vehicles fitted with special purpose equipment and having no goods carrying capacity.
Passenger vehicles	Includes cars, station wagons, four-wheel drive passenger vehicles and forward control passenger vehicles with up to nine seats (including the driver).
Registrations	This includes all registrations processed by the motor vehicle registration authorities in the States and Territories during the relevant period.
Rigid trucks	Vehicles constructed primarily for load carrying with a gross vehicle mass of 3.5 tonnes or more.
VIN	The Vehicle Identification Number (VIN) uniquely identifies each vehicle. Embedded in the number are details of make and model together with other relevant information about the vehicle. The VIN is collected by the motor vehicle registration authorities at the time of registration.

The ABS publishes a wide range of information on Australia's economic and social conditions. A catalogue of publications and products is available from any of our offices (see below).

INFORMATION CONSULTANCY SERVICES

Information tailored to special needs of clients can be obtained from the Information Consultancy Service available at ABS Offices (see below).

ABS PRODUCTS

A large number of ABS products is available from the ABS Bookshops (see below). The ABS also provides a subscription service – you can telephone the ABS Subscription Service Australia wide toll free on 1300 3663 23.

ELECTRONIC SERVICES

A large range of data is available via on-line services, diskette, magnetic tape, tape cartridge and CD ROM. For more details about our electronic data services, contact any ABS office (see below) or e-mail us at:

- client.services@abs.gov.au

GENERAL SALES AND INQUIRIES

- Sydney 02 9268 4611
 - Melbourne 03 9615 7755
 - Brisbane 07 3222 6351
 - Perth 08 9360 5140
 - Adelaide 08 8237 7100
 - Hobart 03 6222 5800
 - Darwin 08 8943 2111
 - Canberra 02 6252 6627
-
- Information Services, ABS
PO Box 10, Belconnen ACT 2616



2930100004982

ISSN 1323-4528

RRP \$15.00